

**CHEM 100**  
**Exam 3**

Name \_\_\_\_\_  
Summer 2011

**Due by 3:00 PM Tuesday, June 26**  
**NO LATE PAPERS ACCEPTED!**

Follow instructions on the attached exam. Clearly mark your answers. **YOU MUST SHOW YOUR WORK TO RECEIVE CREDIT.**

**Instructions**

- *This exam MUST be completed INDIVIDUALLY and in your own words.* Group work or plagiarism will result in a zero for the exam. You may not receive assistance from anyone else.
- Before opening the exam, prepare for it like you would for a traditional, in-class exam. Review concepts and examples from the text, as well as those discussed in class. This preparation will help to maximize your effort on the exam and allow you to complete it more efficiently. You should be able to complete the exam in 50 minutes or less.
- Once you have completed the exam, you may refer to your textbook or lecture notes for a maximum of 20 minutes to verify and/or correct your answers. You **MAY NOT** use the internet!! **All answers must be in your own words, verbatim copying from the text will result in a score of zero for the problem.**

**“Open Book” Portion Time Restriction**

You may spend no more than twenty (20) minutes using your book or notes to aid you on this exam. This must be in one continuous block of time. You are on your honor to adhere to this restriction and record the time spent in the chart below.

Date	Time Began	Time Finished	Total Time
Total Time Spent with Open Book			

**Pledge**

I pledge on my honor that I have completed the exam in accordance with the above instructions and that I have not provided or received unethical assistance. I realize that failure to comply with these instructions will result in a score of zero on the exam.

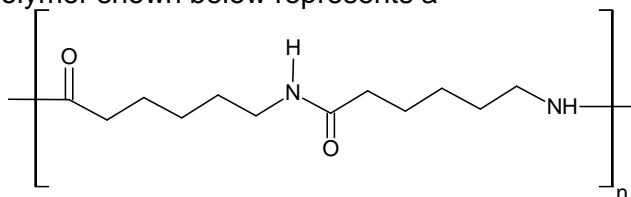
\_\_\_\_\_  
Signature

\_\_\_\_\_  
Date

**Part I. Multiple choice.** Circle the correct answer for each problem. 3 points each

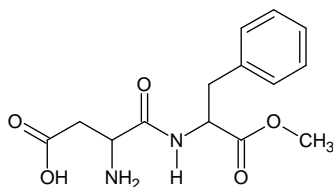
1. A compound containing only carbon and hydrogen and which has no double bonds between atoms is classified as an
  - a. alkene.
  - b. alkyne.
  - c. aromatic.
  - d. alkane.
2. In organic chemistry, compounds are generally classified by
  - a. state.
  - b. color.
  - c. functional group.
  - d. odor.
3. Monomers are
  - a. ethylene.
  - b. small polymers.
  - c. small building blocks of polymers.
  - d. all of the above

4. The segment of a polymer shown below represents a



- a. polyester.
  - b. polyamide.
  - c. polyethylene.
  - d. polystyrene.
5.  $\text{H}_3\text{O}^+$  is called the
    - a. hydroxide ion.
    - b. hydrogen ion.
    - c. hydrate ion.
    - d. hydronium ion.
  6. The compound  $\text{CH}_3\text{NH}_2$  reacts with water to form  $\text{CH}_3\text{NH}_3^+$  and  $\text{OH}^-$ . In this reaction,  $\text{CH}_3\text{NH}_2$  is acting as a(n)
    - a. salt.
    - b. base.
    - c. acid.
    - d. solvent.
  7. If the concentration of a dilute solution of nitric acid is 0.00010 M, what is the pH of that solution?
    - a. 14.0
    - b. 7.0
    - c. 4.0
    - d. 5.0

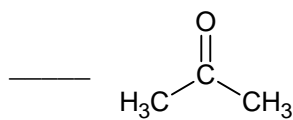
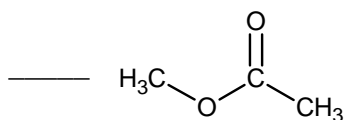
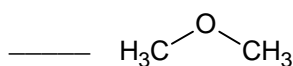
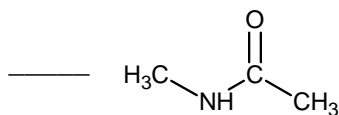
8. The primary structure of a protein is determined by
- the intertwining of protein molecules to form a "functional" protein.
  - the order of amino acids in the protein.
  - the hydrogen bonding that gives the protein three dimensional shape.
  - the amino acid composition.
9. The most important feature that distinguishes one DNA molecule from another is (are)
- the type of phosphate bonds.
  - the order of the bases attached to the sugar phosphate backbone.
  - the type of sugar in each molecule.
  - .all of the above features
10. Aspartame, shown below, is the artificial sweetener in Equal and Nutrasweet. What is the molecular formula of aspartame?



- a.  $C_{13}H_{16}N_2O_5$       b.  $C_{14}H_{18}N_2O_5$       c.  $C_{14}H_{16}N_2O_5$       d.  $C_{14}H_{16}N_2O_3$

**Part II.** Complete each of the following. Point values are noted by each question.

11. Identify the functional group shown in each structure: (8 points)



- ether
- ketone
- ester
- carboxylic acid
- amide
- amine

12. Briefly describe the similarities and differences between addition polymerization and condensation polymerization. (8 points)

13. Define the following terms in a sentence or two each: (8 points)

a. active site:

b. base pair:

c. peptide bond:

d. secondary protein structure:

14. Calculate the hydroxide ion concentration ( $[\text{OH}^-]$ , in moles  $\text{OH}^-$  per liter) and pH for a solution made by diluting 3.50 g of NaOH (molar mass = 40.00 g/mol) to 250 mL with water. (8 points)

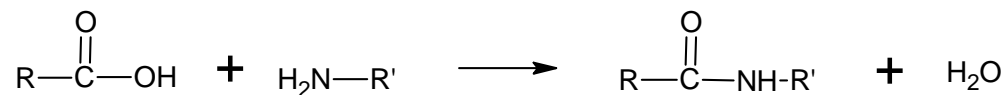
**Part III.** Complete the following 4 problems. **YOU MUST DO ALL FOUR PROBLEMS!** Each problem is worth ten (10) points. You must show your work on calculations to receive partial credit. Report numerical results to the correct number of significant figures and with the appropriate units.

15. Hydrochloric acid (HCl) is classified as a strong acid, while acetic acid ( $\text{CH}_3\text{COOH}$ ) is classified as a weak acid. Explain what these terms mean. If you could examine a 0.10 M solution of HCl and a separate solution 0.10 M of acetic acid on a molecular level, what would you expect to see in each? How would the pH of each solution compare?

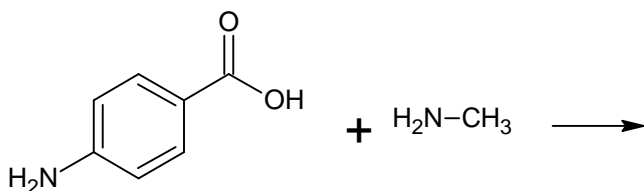
16. Compounds that can serve as monomers for polymerization reactions must have one key property. What property is this? Show how this property manifests itself in both addition and condensation polymerization.

17. DNA and proteins are both polymers. Outline the similarities and differences in the two materials. How do inter- and intramolecular forces lead to interesting shapes of each polymer?

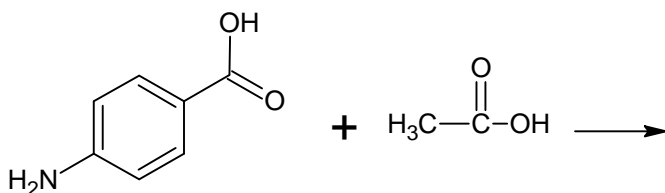
18. Alcohols and carboxylic acids react to form compounds by the process shown below.



- a. What type of functional group is formed when alcohols and carboxylic acids react?
- b. The compound para-aminobenzoic acid (PABA) has seen significant use as a component of sunscreens. Complete the reaction of PABA with methyl amine.



- c. Complete the reaction of PABA with acetic acid.



**Bonus (4 points)**

What is the molecular formula of PABA? (The structure of PABA is shown in above.)

### Possibly Useful Information

$\text{pH} = -\log[\text{H}^+]$	$[\text{H}^+] = 10^{-\text{pH}}$
$[\text{H}^+][\text{OH}^-] = 1.0 \times 10^{-14}$	$N_A = 6.02 \times 10^{23} \text{ mol}^{-1}$

### PERIODIC CHART OF THE ELEMENTS

IA	IIA	IIIB	IVB	VB	VIB	VIIIB	VIII	IB	IIB	IIIA	IVA	VA	VIA	VIIA	INERT GASES		
1 H 1.00797														1 H 1.00797	2 He 4.0026		
3 Li 6.939	4 Be 9.0122										5 B 10.811	6 C 12.0112	7 N 14.0067	8 O 15.9994	9 F 18.9984	10 Ne 20.183	
11 Na 22.9898	12 Mg 24.312										13 Al 26.9815	14 Si 28.086	15 P 30.9738	16 S 32.064	17 Cl 35.453	18 Ar 39.948	
19 K 39.102	20 Ca 40.08	21 Sc 44.956	22 Ti 47.90	23 V 50.942	24 Cr 51.996	25 Mn 54.9380	26 Fe 55.847	27 Co 58.9332	28 Ni 58.71	29 Cu 63.54	30 Zn 65.37	31 Ga 69.72	32 Ge 72.59	33 As 74.9216	34 Se 78.96	35 Br 79.909	36 Kr 83.80
37 Rb 85.47	38 Sr 87.62	39 Y 88.905	40 Zr 91.22	41 Nb 92.906	42 Mo 95.94	43 Tc [99]	44 Ru 101.07	45 Rh 102.905	46 Pd 106.4	47 Ag 107.870	48 Cd 112.40	49 In 114.82	50 Sn 118.69	51 Sb 121.75	52 Te 127.60	53 I 126.904	54 Xe 131.30
55 Cs 132.905	56 Ba 137.34	*57 La 138.91	72 Hf 178.49	73 Ta 180.948	74 W 183.85	75 Re 186.2	76 Os 190.2	77 Ir 192.2	78 Pt 195.09	79 Au 196.967	80 Hg 200.59	81 Tl 204.37	82 Pb 207.19	83 Bi 208.980	84 Po (210)	85 At (210)	86 Rn (222)
87 Fr (223)	88 Ra (226)	†89 Ac (227)	104 Rf (261)	105 Db (262)	106 Sg (266)	107 Bh (262)	108 Hs (265)	109 Mt (266)	110 ? (271)	111 ? (272)	112 ? (277)						

Numbers in parenthesis are mass numbers of most stable or most common isotope.

Atomic weights corrected to conform to the 1963 values of the Commission on Atomic Weights.

The group designations used here are the former Chemical Abstract Service numbers.

#### \* Lanthanide Series

58 Ce 140.12	59 Pr 140.907	60 Nd 144.24	61 Pm (147)	62 Sm 150.35	63 Eu 151.96	64 Gd 157.25	65 Tb 158.924	66 Dy 162.50	67 Ho 164.930	68 Er 167.26	69 Tm 168.934	70 Yb 173.04	71 Lu 174.97
--------------------	---------------------	--------------------	-------------------	--------------------	--------------------	--------------------	---------------------	--------------------	---------------------	--------------------	---------------------	--------------------	--------------------

#### † Actinide Series

90 Th 232.038	91 Pa (231)	92 U 238.03	93 Np (237)	94 Pu (242)	95 Am (243)	96 Cm (247)	97 Bk (247)	98 Cf (249)	99 Es (254)	100 Fm (253)	101 Md (256)	102 No (256)	103 Lr (257)
---------------------	-------------------	-------------------	-------------------	-------------------	-------------------	-------------------	-------------------	-------------------	-------------------	--------------------	--------------------	--------------------	--------------------